

DWOK tom 16, s. 105, nr 1

Puławy

Kolęda

DWOK tom 16, s. 106, nr 2

Puławy

DWOK tom 16, s. 106, nr 3

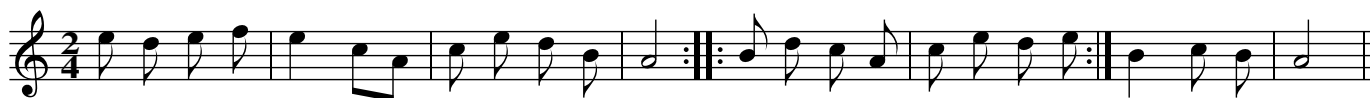
Zyrzyn _#

DWOK tom 16, s. 107, nr 4

Końskowola

DWOK tom 16, s. 107, nr 5

Czemierniki



Tam na Ukrainie w gęstej krzewinie, paśliśmy owieczki w niskiej dolinie.
Aż tam prędko aniołowie krzyczą bieżąc pastuszkowie: do Betlejem

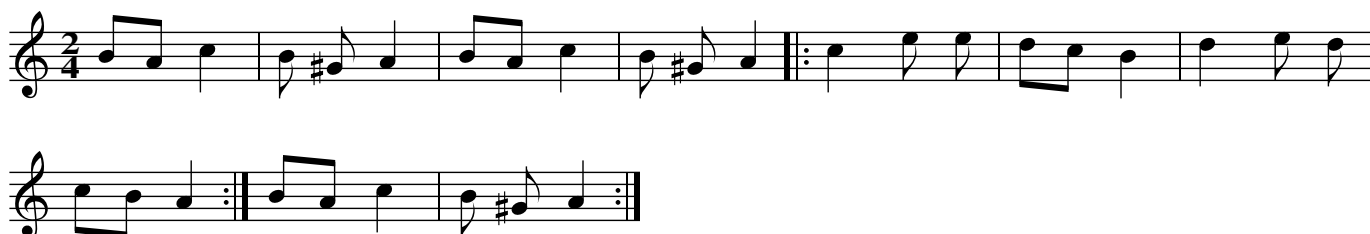
Michał się wymawia, że: ja nie mogę, zleciałem ja z dachu, złamałem nogę
A nasz Franek - wlażł we dzbanek, a Jan chudy - skrył się w dudy, oj skrył, się skrył

Kiedy Cię obchodzim, pociecho nasza, przyjm-że te ochfiary, idąc do lasa.
Kuba daje swe ofiary, przyjm to Boże co kto może, utajony.

U pani gospodyni, są w koszu sery, a dajcież nam, dajcie choćby ze cztery,
Da z tych czterech choćby jeden, da zjemy go choćby z chlebem, i pójdziemy.

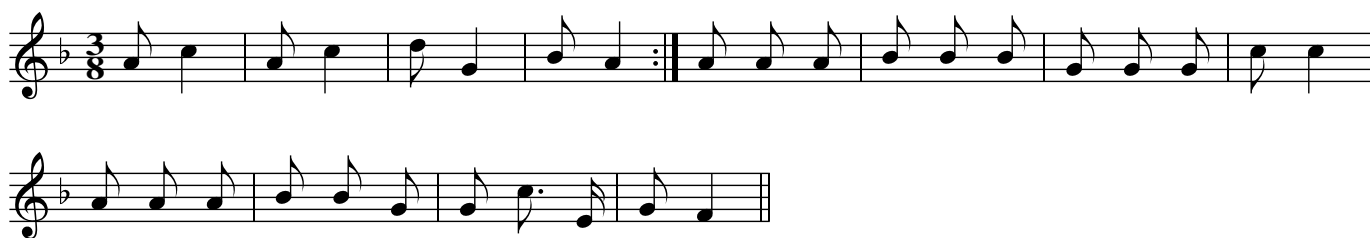
DWOK tom 16, s. 108, nr 6

od Puław (Osiny)



DWOK tom 16, s. 109, nr 7

Puławy



DWOK tom 16, s. 109, nr 8

Radecznica



DWOK tom 16, s. 109, nr 9

od Końsko-woli, Kurowa



DWOK tom 16, s. 110, nr 10

od Puław (Osiny)



DWOK tom 16, s. 110, nr 11 (1)

Kraśnik



DWOK tom 16, s. 125, nr 13 (1)

od Bychawy (Gałęzów)



DWOK tom 16, s. 127, nr 16



DWOK tom 16, s. 128, nr 19

od Bełżyc (Wronów)



DWOK tom 16, s. 153, nr 79

od Tarnogóry, Izbicy

Two staves of musical notation in 2/4 time, key of D major. The first staff begins with a treble clef, a key signature of one sharp (F#), and a 2/4 time signature. It contains a melody with a repeat sign and a fermata. The second staff continues the melody with similar rhythmic patterns and a final fermata.

DWOK tom 16, s. 153, nr 80 (1)

Two staves of musical notation in 3/4 time, key of D major. The first staff begins with a treble clef, a key signature of one sharp (F#), and a 3/4 time signature. It contains a melody with a repeat sign and a fermata. The second staff continues the melody with similar rhythmic patterns and a final fermata.

DWOK tom 16, s. 153, nr 81

One staff of musical notation in 3/4 time, key of D major. It begins with a treble clef, a key signature of one sharp (F#), and a 3/4 time signature. The melody features a repeat sign with first and second endings, indicated by '1' and '2' above the notes.

DWOK tom 16, s. 154, nr 82

Three staves of musical notation in 3/4 time, key of D major. The first staff begins with a treble clef, a key signature of one sharp (F#), and a 3/4 time signature. It contains a melody with a fermata. The second and third staves continue the melody with similar rhythmic patterns and a final fermata.

DWOK tom 16, s. 155, nr 87

Musical score for DWOK tom 16, s. 155, nr 87. The score consists of two staves. The first staff contains six measures of music in 3/8 time, featuring eighth and sixteenth notes, with a fermata over the second measure. The second staff contains two measures of music, ending with a double bar line.

DWOK tom 16, s. 161, nr 97

Musical score for DWOK tom 16, s. 161, nr 97. The score consists of two staves. The first staff contains eight measures of music in 3/8 time, featuring eighth and sixteenth notes. The second staff contains eight measures of music, also in 3/8 time, featuring eighth and sixteenth notes, ending with a double bar line.

DWOK tom 16, s. 162, nr 98

Musical score for DWOK tom 16, s. 162, nr 98. The score consists of two staves. The first staff contains eight measures of music in 3/8 time, featuring eighth and sixteenth notes, with a key signature of one sharp (F#). The second staff contains eight measures of music, also in 3/8 time, featuring eighth and sixteenth notes, ending with a double bar line.

DWOK tom 16, s. 163, nr 100 (1)

[wersja dużych nut]

Musical score for DWOK tom 16, s. 163, nr 100 (1) - large notes version. The score consists of two staves. The first staff contains six measures of music in 3/8 time, featuring eighth and sixteenth notes, with a fermata over the second measure. The second staff contains six measures of music, also in 3/8 time, featuring eighth and sixteenth notes, ending with a double bar line.

[wersja małych nut]

Musical score for DWOK tom 16, s. 163, nr 100 (1) - small notes version. The score consists of two staves. The first staff contains six measures of music in 3/8 time, featuring eighth and sixteenth notes, with a fermata over the second measure. The second staff contains six measures of music, also in 3/8 time, featuring eighth and sixteenth notes, ending with a double bar line.

DWOK tom 16, s. 165, nr 113

Two staves of musical notation in 3/8 time. The first staff contains a melody with a repeat sign and a double bar line. The second staff continues the melody with a repeat sign and a double bar line.

DWOK tom 16, s. 165, nr 114

Two staves of musical notation in 3/8 time. The first staff contains a melody with a repeat sign and a double bar line. The second staff continues the melody with a repeat sign and a double bar line.

DWOK tom 16, s. 166, nr 116

Two staves of musical notation in 3/8 time with a key signature of one sharp (F#). The first staff contains a melody with a repeat sign and a double bar line. The second staff continues the melody with a repeat sign and a double bar line.

DWOK tom 16, s. 127, nr 16

One staff of musical notation in 2/4 time. A tempo marking above the staff indicates a quarter note equals 120 (♩ = 120). The staff contains a melody with a repeat sign and a double bar line.

DWOK tom 16, s. 187, nr 163

[wersja dużych nut]

Musical notation for DWOK tom 16, s. 187, nr 163, version 1 (large notes). It consists of two staves of music in G major and 3/8 time. The first staff contains six measures of music, and the second staff contains six measures, ending with a double bar line.

[wersja małych nut]

Musical notation for DWOK tom 16, s. 187, nr 163, version 2 (small notes). It consists of two staves of music in G major and 3/8 time. The first staff contains six measures of music, and the second staff contains six measures, ending with a double bar line.

DWOK tom 16, s. 188, nr 166

Musical notation for DWOK tom 16, s. 188, nr 166. It consists of two staves of music in G major and 3/8 time. The first staff contains six measures of music, and the second staff contains six measures, ending with a double bar line.

DWOK tom 16, s. 188, nr 167

Musical notation for DWOK tom 16, s. 188, nr 167. It consists of two staves of music in G major and 3/8 time. The first staff contains six measures of music, and the second staff contains six measures, ending with a double bar line.

DWOK tom 16, s. 188, nr 169

Musical notation for DWOK tom 16, s. 188, nr 169. It consists of two staves of music in G major and 3/8 time. The first staff contains six measures of music, and the second staff contains six measures, ending with a double bar line.

DWOK tom 16, s. 189, nr 170

[wersja dużych nut]



[wersja małych nut]



DWOK tom 16, s. 189, nr 171

[wersja dużych nut]



[wersja małych nut]



DWOK tom 16, s. 189, nr 173



DWOK tom 16, s. 191, nr 174

Musical score for DWOK tom 16, s. 191, nr 174. It consists of three staves of music in 3/8 time, featuring a melodic line with eighth and sixteenth notes and a bass line with eighth notes.

DWOK tom 16, s. 191, nr 175

Musical score for DWOK tom 16, s. 191, nr 175. It consists of two staves of music in 3/8 time, featuring a melodic line with eighth notes and a bass line with eighth notes.

DWOK tom 16, s. 193, nr 178

[wersja dużych nut]

Musical score for DWOK tom 16, s. 193, nr 178, large notes version. It consists of two staves of music in 3/8 time, featuring a melodic line with eighth notes and a bass line with eighth notes.

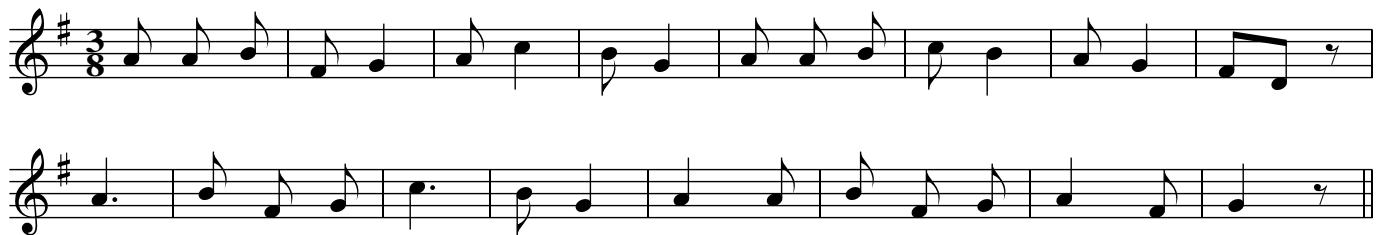
[wersja małych nut]

Musical score for DWOK tom 16, s. 193, nr 178, small notes version. It consists of two staves of music in 3/8 time, featuring a melodic line with eighth notes and a bass line with eighth notes.

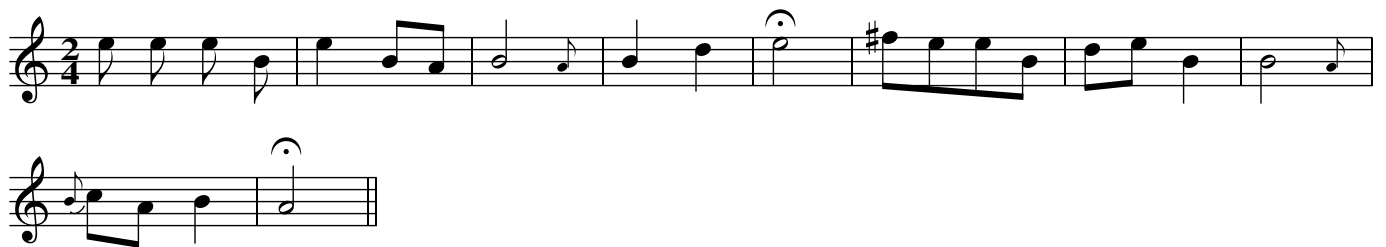
DWOK tom 16, s. 193, nr 179



DWOK tom 16, s. 194, nr 183



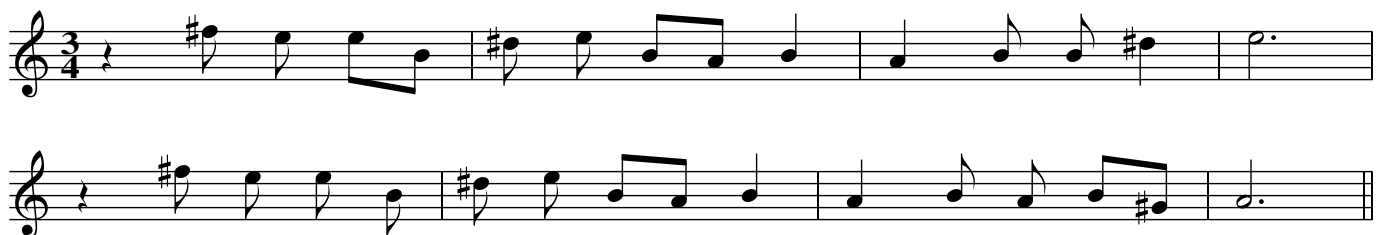
DWOK tom 16, s. 195, nr 185



DWOK tom 16, s. 195, nr 185



DWOK tom 16, s. 197, nr 191



DWOK tom 16, s. 198, nr 192

Two staves of musical notation. The first staff is in C major, 4/4 time, featuring a sequence of eighth and quarter notes with a key signature change to D major. The second staff contains a short melodic phrase with a sharp sign on the second note.

DWOK tom 16, s. 198, nr 193

Two staves of musical notation. The first staff is in 3/8 time, featuring a sequence of eighth and quarter notes. The second staff contains a short melodic phrase with a sharp sign on the second note.

DWOK tom 16, s. 201, nr 204

One staff of musical notation in D major, 3/8 time, featuring a sequence of eighth and quarter notes with a fermata over the final note.

DWOK tom 16, s. 201, nr 207

Two staves of musical notation. The first staff is in 3/8 time, featuring a sequence of eighth and quarter notes with a fermata over the final note. The second staff contains a sequence of eighth and quarter notes with a fermata over the final note and a trill (tr) over the final note.

DWOK tom 16, s. 202, nr 208

Two staves of musical notation. The first staff is in C major, 4/4 time, featuring a sequence of eighth and quarter notes with a fermata over the final note. The second staff contains a sequence of eighth and quarter notes with a fermata over the final note.

DWOK tom 16, s. 203, nr 216

Two staves of musical notation in treble clef, key of D major, and 3/8 time. The first staff contains a melody of eighth and quarter notes. The second staff contains a shorter melodic phrase ending with a repeat sign.

DWOK tom 16, s. 205, nr 224

Two staves of musical notation in treble clef, key of D major, and 2/4 time. The first staff contains a melody of quarter and eighth notes. The second staff contains a similar melody with a triplet of eighth notes.

DWOK tom 16, s. 205, nr 225

One staff of musical notation in treble clef, key of D major, and 3/8 time. The melody consists of eighth and quarter notes, ending with a repeat sign.

DWOK tom 16, s. 207, nr 239

Two staves of musical notation in treble clef, key of D major, and 3/8 time. The first staff contains a melody with a repeat sign. The second staff contains a shorter melodic phrase.

DWOK tom 16, s. 209, nr 242

Andante

One staff of musical notation in treble clef, key of D major, and 2/4 time. The tempo is marked 'Andante'. The melody features a triplet of eighth notes and a half note. The number '3' is written below the triplet.

DWOK tom 16, s. 212, nr 250 (1)

Tatary



DWOK tom 16, s. 212, nr 251



DWOK tom 16, s. 213, nr 256

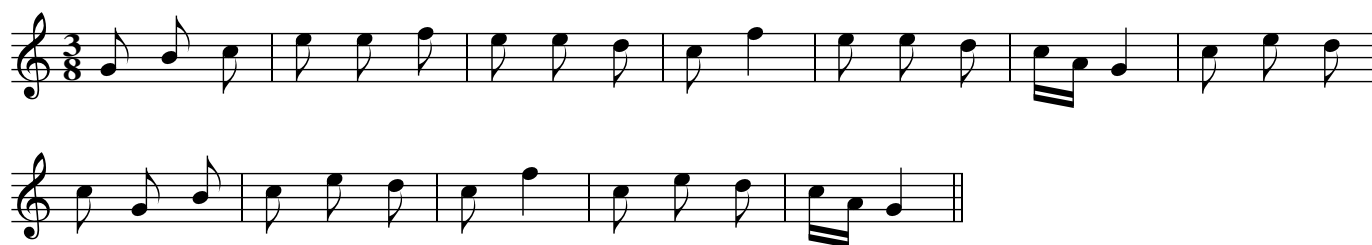


DWOK tom 16, s. 213, nr 258



DWOK tom 16, s. 214, nr 259

Vivace



DWOK tom 16, s. 214, nr 260

Musical score for DWOK tom 16, s. 214, nr 260. The score consists of two staves. The first staff begins with a treble clef, a key signature of one sharp (F#), and a 3/8 time signature. The melody starts with a quarter note G4, followed by eighth notes A4, B4, and C5. The second staff continues the melody with eighth notes D5, E5, and F#5, ending with a quarter note G5. A repeat sign is present at the end of the first staff.

DWOK tom 16, s. 215, nr 262

Musical score for DWOK tom 16, s. 215, nr 262. The score consists of two staves. The first staff begins with a treble clef, a key signature of one sharp (F#), and a 3/8 time signature. The melody starts with a quarter note G4, followed by eighth notes A4, B4, and C5. The second staff continues the melody with eighth notes D5, E5, and F#5, ending with a quarter note G5. A repeat sign is present at the end of the first staff.

DWOK tom 16, s. 215, nr 263

Musical score for DWOK tom 16, s. 215, nr 263. The score consists of two staves. The first staff begins with a treble clef, a key signature of one sharp (F#), and a 2/4 time signature. The melody starts with a quarter note G4, followed by eighth notes A4, B4, and C5. The second staff continues the melody with eighth notes D5, E5, and F#5, ending with a quarter note G5. A repeat sign is present at the end of the first staff.

DWOK tom 16, s. 216, nr 264

Musical score for DWOK tom 16, s. 216, nr 264. The score consists of three staves. The first staff begins with a treble clef, a key signature of one sharp (F#), and a 3/8 time signature. The melody starts with a quarter note G4, followed by eighth notes A4, B4, and C5. The second staff continues the melody with eighth notes D5, E5, and F#5, ending with a quarter note G5. The third staff continues the melody with eighth notes A5, B5, and C6, ending with a quarter note G6. A repeat sign is present at the end of the first staff.

DWOK tom 16, s. 216, nr 265

[wersja dużych nut]



[wersja małych nut]

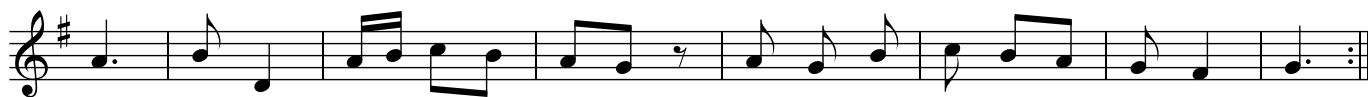


DWOK tom 16, s. 216, nr 266



DWOK tom 16, s. 217, nr 268

Nuta ob. nr 183



DWOK tom 16, s. 218, nr 271

Nuta ob. nr 166 _#



DWOK tom 16, s. 220, nr 274 (1)

Zawieprzycie

Musical score for DWOK tom 16, s. 220, nr 274 (1). It consists of two staves of music in 2/4 time, key of D major. The melody is written in a single line on a treble clef staff. The first staff contains measures 1-6, and the second staff contains measures 7-12. The piece ends with a fermata over the final note.

DWOK tom 16, s. 220, nr 276

Zawieprzycie

Musical score for DWOK tom 16, s. 220, nr 276. It consists of a single staff of music in 3/8 time, key of D major. The melody is written in a single line on a treble clef staff. The piece ends with a double bar line.

DWOK tom 16, s. 222, nr 286

Zawieprzycie

Musical score for DWOK tom 16, s. 222, nr 286. It consists of two staves of music in 3/8 time, key of D major. The melody is written in a single line on a treble clef staff. The first staff contains measures 1-4, and the second staff contains measures 5-8. The piece ends with a double bar line.

DWOK tom 16, s. 223, nr 288

Nuta ob. nr 163

Musical score for DWOK tom 16, s. 223, nr 288. It consists of two staves of music in 3/8 time, key of D major. The melody is written in a single line on a treble clef staff. The first staff contains measures 1-8, and the second staff contains measures 9-12. The piece ends with a fermata over the final note.

DWOK tom 16, s. 223, nr 289 (1)

[wersja małych nut]

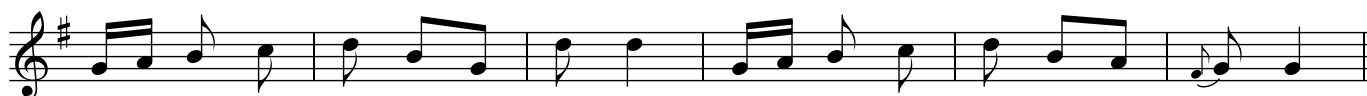


[wersja dużych nut]



DWOK tom 16, s. 224, nr 293

Nuta ob. nr 225



DWOK tom 16, s. 224, nr 294



DWOK tom 16, s. 224, nr 295

Ob. nr 239



DWOK tom 16, s. 225, nr 302

