

DWOK tom 36, s. 2, nr 1

Musical score for DWOK tom 36, s. 2, nr 1. It consists of three staves of music in treble clef with a key signature of one sharp (F#) and a 3/8 time signature. The first staff contains six measures of music. The second staff contains six measures, including a measure with a fermata. The third staff contains five measures, ending with a fermata.

DWOK tom 36, s. 3, nr 2

Musical score for DWOK tom 36, s. 3, nr 2. It consists of three staves of music in treble clef with a key signature of one sharp (F#) and a 3/8 time signature. The first staff contains seven measures, with a triplet of eighth notes in the final measure. The second staff contains six measures, with triplet markings under the first, third, and fifth measures. The third staff contains seven measures, ending with a fermata.

DWOK tom 36, s. 4, nr 3

Musical score for DWOK tom 36, s. 4, nr 3. It consists of two staves of music in treble clef with a key signature of one sharp (F#) and a 3/8 time signature. The first staff contains seven measures, with a fermata in the final measure. The second staff contains seven measures, ending with a fermata.

DWOK tom 36, s. 4, nr 4

Tuliczów

Skrzypek

Musical score for violin, DWOK tom 36, s. 4, nr 4. The score is written in 2/4 time and consists of five staves. The first staff begins with a treble clef and a 2/4 time signature. The music features a series of eighth and sixteenth notes, with some chords. A triplet of eighth notes is marked with a '3' in the third measure of the fourth staff. The piece concludes with a double bar line and repeat dots at the end of the fifth staff.

DWOK tom 36, s. 5, nr 5

Tuliczów

Skrzypek

Musical score for violin, DWOK tom 36, s. 5, nr 5. The score is written in 3/8 time and consists of three staves. The first staff begins with a treble clef and a 3/8 time signature. The music features a series of eighth and sixteenth notes, with some chords. There are three triplet markings, each with a '3' below the notes. The piece concludes with a double bar line and repeat dots at the end of the third staff.

DWOK tom 36, s. 5, nr 6

Tahaczyn

Skrzypek

Musical score for violin, DWOK tom 36, s. 5, nr 6. The score consists of three staves. The first staff begins with a treble clef and a 3/8 time signature. It contains a sequence of notes with two triplet markings (indicated by a '3' below the notes). The second and third staves continue the melodic line with various rhythmic values and accidentals.

DWOK tom 36, s. 7, nr 7

Musical score for violin, DWOK tom 36, s. 7, nr 7. The score consists of three staves. The first staff begins with a treble clef and a 2/8 time signature. It features a melodic line with several notes marked with a fermata. The second and third staves continue the piece with similar rhythmic patterns and accidentals.

DWOK tom 36, s. 8, nr 8

Musical score for violin, DWOK tom 36, s. 8, nr 8. The score consists of three staves. The first staff begins with a treble clef and a 2/8 time signature. It contains a continuous melodic line with various rhythmic values and accidentals. The second and third staves continue the piece with similar rhythmic patterns and accidentals.

DWOK tom 36, s. 10, nr 12

Musical score for DWOK tom 36, s. 10, nr 12. The score consists of three staves of music in treble clef, key of D major (one sharp), and 3/8 time signature. The first staff contains 8 measures, the second staff contains 8 measures, and the third staff contains 4 measures. The music features a mix of eighth and sixteenth notes, with some rests and a final double bar line.

DWOK tom 36, s. 67, nr 117

Bilcze

Musical score for DWOK tom 36, s. 67, nr 117. The score consists of three staves of music in treble clef, key of D major (one sharp), and 2/4 time signature. The first staff contains 6 measures, the second staff contains 6 measures, and the third staff contains 6 measures. The music features a mix of quarter and eighth notes, with some rests and a final double bar line.

DWOK tom 36, s. 67, nr 118

Pustumyły (?), Siedliszcze

Musical score for DWOK tom 36, s. 67, nr 118. The score consists of two staves of music in treble clef, key of D major (one sharp), and 2/4 time signature. The first staff contains 6 measures, and the second staff contains 4 measures. The music features a mix of quarter and eighth notes, with some rests and a final double bar line.

DWOK tom 36, s. 67, nr 119

od Lubaru

DWOK tom 36, s. 68, nr 120

Piszczateńce

Świ - ty mi - sia - ciu z ra - ju do na - sze - bo ko - ro - wa - ju,
 szczob bu - ło wy - dne - seń - ko kra - ja - ty dry - bne - seń - ko.

1. Świty misiaciu z raju do naszebo korowaju,
 szczob buło wydnesieńko krajaty drybneseńko.
2. Nasz družba korowaj kraje, złoty nożyk maje.
 srybnu taliroczku, wyszywanu chustoczku.

DWOK tom 36, s. 68, nr 121

Tuliczów

Waryant

DWOK tom 36, s. 68, nr 122

Bilcze

Musical score for DWOK tom 36, s. 68, nr 122. The score consists of three staves of music in 3/8 time. The first staff begins with a treble clef and a key signature of one sharp (F#). The melody is composed of eighth and sixteenth notes, with some rests. The second staff continues the melody with similar rhythmic patterns. The third staff concludes the piece with a final note and a double bar line.

DWOK tom 36, s. 69, nr 123

Pustumyły, Siedliszcze

Musical score for DWOK tom 36, s. 69, nr 123. The score consists of two staves of music in 3/4 time. The first staff begins with a treble clef and a key signature of one sharp (F#). The melody starts with a half note, followed by quarter notes and eighth notes. The second staff continues the melody with similar rhythmic patterns, ending with a double bar line.

DWOK tom 36, s. 69, nr 124

Tuliczów

Musical score for DWOK tom 36, s. 69, nr 124. The score consists of two staves of music in 2/4 time. The first staff begins with a treble clef and a key signature of one flat (Bb). The melody is composed of quarter and eighth notes. The second staff continues the melody with similar rhythmic patterns, ending with a double bar line.

DWOK tom 36, s. 70, nr 125

Tuliczów

Musical score for DWOK tom 36, s. 70, nr 125. The score consists of two staves of music in 3/8 time. The first staff begins with a treble clef and a key signature of one sharp (F#). The melody is composed of eighth and sixteenth notes, with some rests. The second staff continues the melody with similar rhythmic patterns, ending with a double bar line.

DWOK tom 36, s. 70, nr 126

Pustumyły, Siedliszcze

Musical score for DWOK tom 36, s. 70, nr 126. The score is written for two staves in 2/4 time with a key signature of one sharp (F#). The melody features eighth and sixteenth notes, with a double bar line and repeat sign at the end of the first staff.

DWOK tom 36, s. 71, nr 127

Tuliczów

Musical score for DWOK tom 36, s. 71, nr 127. The score is written for two staves in 2/4 time with a key signature of one sharp (F#). The melody includes eighth and sixteenth notes, with a double bar line and repeat sign at the end of the first staff.

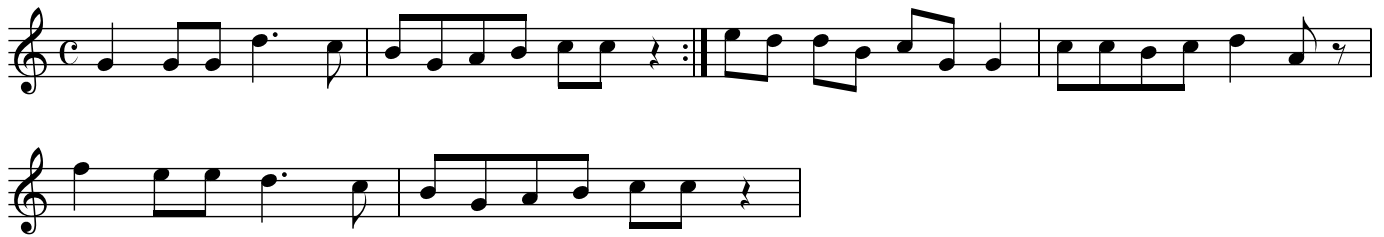
DWOK tom 36, s. 406, nr 618

Musical score for DWOK tom 36, s. 406, nr 618. The score is written for two staves in 2/4 time with a key signature of one sharp (F#). The melody consists of eighth and sixteenth notes, with a double bar line and repeat sign at the end of the first staff.

DWOK tom 36, s. 406, nr 619

Musical score for DWOK tom 36, s. 406, nr 619. The score is written for two staves in 2/4 time with a key signature of one sharp (F#). The melody includes eighth and sixteenth notes, with a double bar line and repeat sign at the end of the first staff. A triplet of eighth notes is marked with the number '3' below it.

DWOK tom 36, s. 405, nr 620



DWOK tom 36, s. 406, nr 621



DWOK tom 36, s. 406, nr 622

Żytomierz



DWOK tom 36, s. 407, nr 623

Tuliczów



DWOK tom 36, s. 408, nr 624

Musical score for DWOK tom 36, s. 408, nr 624. The score consists of two staves in 3/4 time. The first staff begins with a treble clef and a key signature of one flat (B-flat). The melody features eighth and sixteenth notes, with a fermata over the final note. The second staff continues the melody with similar rhythmic patterns and a repeat sign at the end.

DWOK tom 36, s. 408, nr 625

Musical score for DWOK tom 36, s. 408, nr 625. The score consists of three staves in 2/4 time. The first staff begins with a treble clef and a key signature of one flat (B-flat). The melody is characterized by eighth and sixteenth notes. The second and third staves continue the piece, with the third staff ending with a repeat sign.

DWOK tom 36, s. 409, nr 626

Luck

Musical score for DWOK tom 36, s. 409, nr 626. The score consists of three staves in 3/8 time. The first staff begins with a treble clef and a key signature of two flats (B-flat and E-flat). The melody features eighth and sixteenth notes. The second and third staves continue the piece, with the third staff including first and second endings marked with '1' and '2' respectively, and ending with a repeat sign.

DWOK tom 36, s. 410, nr 627

Musical score for DWOK tom 36, s. 410, nr 627. The score consists of three staves of music in 3/4 time, featuring a key signature of one flat (Bb). The first staff begins with a treble clef and a key signature of one flat. The music is composed of eighth and quarter notes, ending with a double bar line and repeat dots. The second and third staves continue the melody with similar rhythmic patterns.

DWOK tom 36, s. 410, nr 628

Musical score for DWOK tom 36, s. 410, nr 628. The score consists of two staves of music in 3/4 time, featuring a key signature of one sharp (F#). A tempo marking above the first staff indicates a quarter note equals 120 (♩ = 120). The first staff begins with a treble clef and a key signature of one sharp. The music includes eighth and quarter notes, with a triplet of eighth notes marked with a '3' above it. The second staff continues the melody, ending with a double bar line and repeat dots.

DWOK tom 36, s. 411, nr 629

Musical score for DWOK tom 36, s. 411, nr 629. The score consists of two staves of music in 3/4 time, featuring a key signature of one sharp (F#). The first staff begins with a treble clef and a key signature of one sharp. The music is composed of eighth and quarter notes, ending with a double bar line and repeat dots. The second staff continues the melody with similar rhythmic patterns.

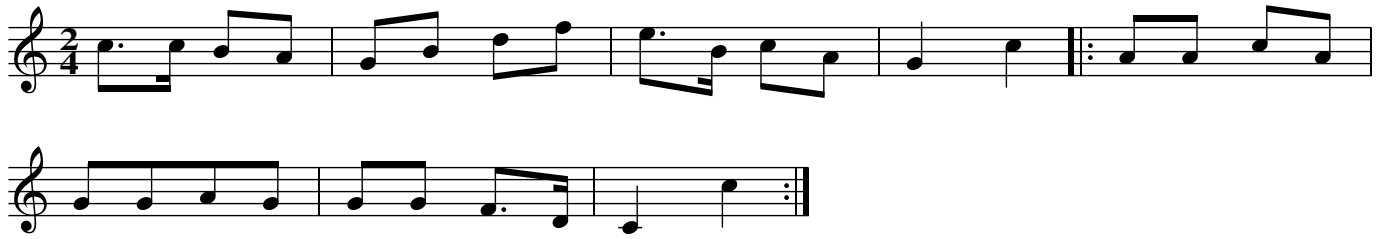
DWOK tom 36, s. 411, nr 630

od Lubaru

Musical score for DWOK tom 36, s. 411, nr 630. The score consists of two staves of music in 2/4 time, featuring a key signature of one sharp (F#). The first staff begins with a treble clef and a key signature of one sharp. The music is composed of eighth and quarter notes, ending with a double bar line and repeat dots. The second staff continues the melody with similar rhythmic patterns.

DWOK tom 36, s. 411, nr 631

od Lubaru



DWOK tom 36, s. 411, nr 632

Bilcze

